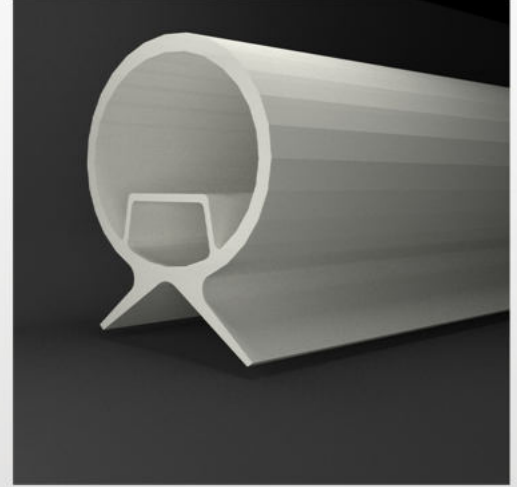


AIRLED AHU

Product Specifications/Ürün Özellikleri

Product Name	: Aired- AHU
Dimension	: H28 /W37 mm
PCB Increment	: Power Connection and cut point every 50 mm
LED pitch	: 10 mm
Chip	: Samsung
Beam Angle	: 180°
Colours	: White
Bin/Step	: 3 step Macadam ellipse
CRI	: 85
Lifetime	: 50.000 hours
Operating Temp.	: -40°, +200
IP Rating	: IP68
Mounting	: Nötr Silicon
Minumum bend radius	: 360 mm
Connection	: Hardwire tails or male/female connectors
Control	: 0-10/DMX/DALI
Case Type	: Flexible Silicon Case



Performance Data/ Performans Verileri (for 1000mm)

Power consumption	: 13 W
Supply voltage	: 24 V DC
Supply current	: 0.5 A

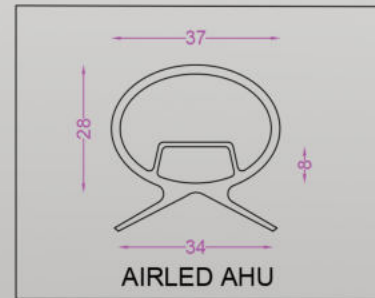
Color Characteristics / Renk Özellikleri

Correlated Color Temperatur (CCT)	: 3000K
Colour rendering index (CRI,RA)	: 85
Chromatic Coordinates	: 0.4 A

Light Output/ Işık Çıkışı

Total Light output (Lumens)	: 1445
Luminaire efficacy (lm/W)	: 85.13
Beam angle	: 180°

Tecnical Drawing/ Teknik Çizim



Product and Power Options

Product Name/Number of LEDs	Max Length (m)	Light Color	Voltage(V)	Power (W/mt)	Luminous Flux (lm/m)	Weight (mt/gr)
AHU/126LED	100 m	WW	24V DC	13	1445	400
AHU/126LED	100 m	NW	24V DC	13	1532	400
AHU/126LED	100 m	CW	24V DC	13	1503	400
AHU/126LED	100 m	WW	12V DC	7.2	723	400
AHU/126LED	100 m	NW	12V DC	7.2	766	400
AHU/126LED	100 m	CW	12V DC	7.2	752	400
AHU/72LED	100 m	RGB PIXEL	24V DC	14.4	--	400
AHU/72LED	100 m	RGBW	24V DC	19.2	--	400
AHU/72LED	100 m	RGB	24V DC	19.2	--	400



● WW, Warm White	3000K
● NW, Natural White	4000K
● CW, Cold White	6500K

